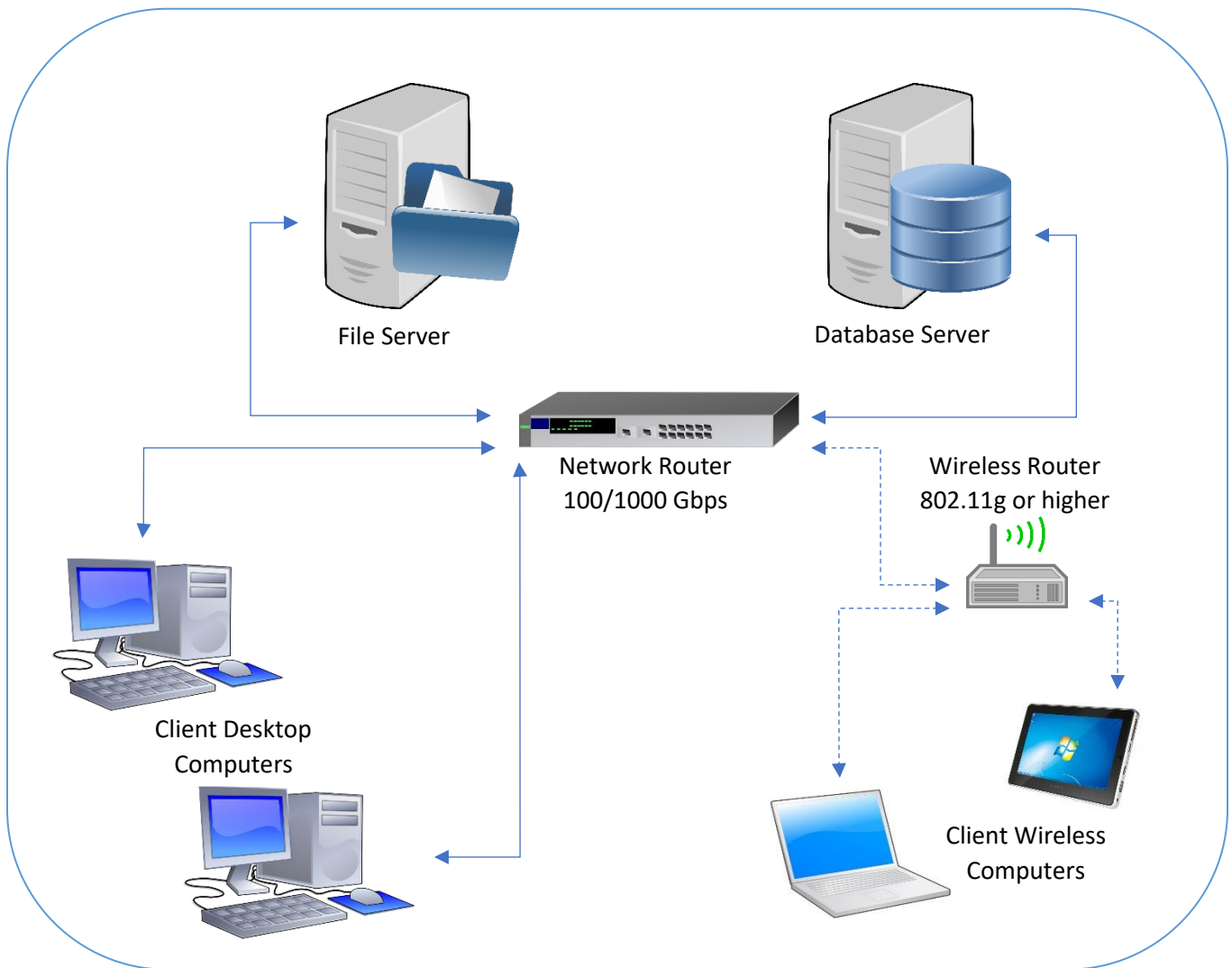


# Porter Lee Applications

## Minimum System Specifications

The specifications outlined in this document are minimum system specs and should only be used as a guide in planning your system architecture. Porter Lee recommends that each agency's IT staff work with Porter Lee to draft specifications based on the individual project scope.

### Client-Server applications



Minimum Schematic Diagram  
(Dotted lines indicate optional features)

## The Crime Fighter BEAST

Integrated Evidence Tracking Systems for Police Departments and Crime Laboratories

1901 Wright Blvd. Schaumburg IL 60193

[www.porterlee.com](http://www.porterlee.com)

(847) 985-2060



File Server	
OS	Windows Server R2 - 2012 / 2014 / 2016
CPU	Server Grade Quad Core Processor 2.5 Ghz or Higher
Ram	16 GB or Higher
Hard Drive	1 Gig of available hard drive space (Hard drive space will vary depending on configuration)
Display	1024x768 or higher resolution
Peripherals	Microsoft Windows compatible pointing device
Third Party Applications	<ul style="list-style-type: none"> <li>• Adobe Acrobat Reader DC / 2017</li> <li>• 2008 Crystal Report Runtime dll's or higher depending on application</li> </ul>

Database Server	
OS	Windows Server R2 - 2012 / 2014 / 2016
CPU	Server Grade Quad Core Processor 2.5 Ghz or Higher
Ram	16 GB or Higher
Hard Drive	1 Gig of available hard drive space (Hard drive space will vary depending on configuration)
Display	1024x768 or higher resolution
Peripherals	Microsoft Windows compatible pointing device
Third Party Applications	<ul style="list-style-type: none"> <li>• Adobe Acrobat Reader DC / 2017</li> <li>• MS SQL Server 2012 or higher / Oracle 11G or 12C depending on application setup</li> <li>• Database backup managed by local IT (Tape Drive recommended)</li> </ul>

Client Desktop PC / Client Wireless PC	
OS	Windows 7 / 10 Professional
CPU	2.0 Ghz dual-core or Higher
Ram	4 Gig or higher
Hard Drive	1 Gig of available hard drive space (Hard drive space will vary depending on configuration)
Display	1024x768 or higher resolution
Peripherals	<ul style="list-style-type: none"> <li>• Microsoft Windows compatible pointing device</li> <li>• (2) USB Ports 2.0 or higher</li> </ul>
Third Party Applications	Adobe Acrobat Reader DC / 2017

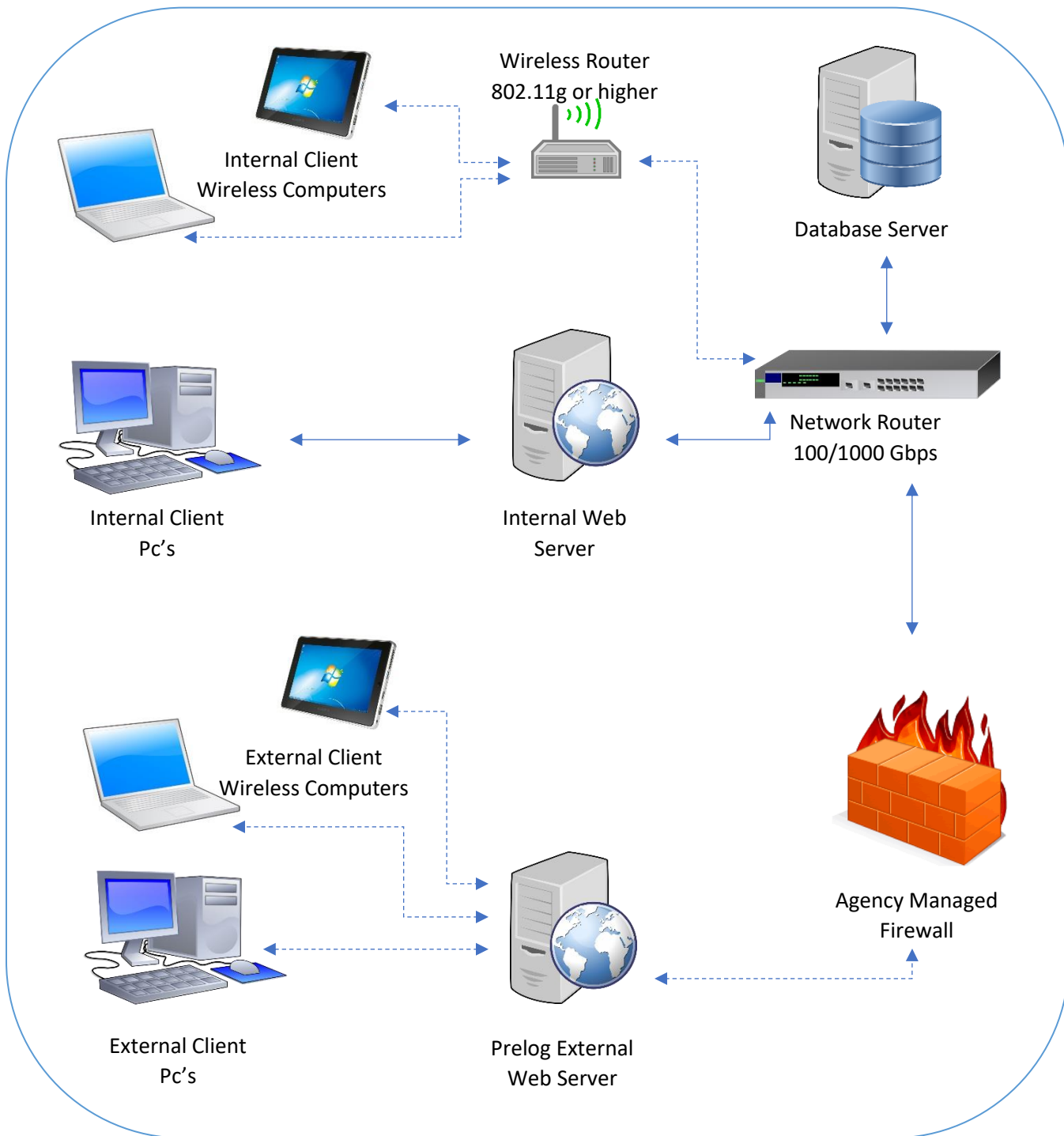


# The Crime Fighter BEAST

Integrated Evidence Tracking Systems for Police Departments and Crime Laboratories



DOTNET applications



Minimum Schematic Diagram  
(Dotted lines indicate optional features)



# The Crime Fighter BEAST

Integrated Evidence Tracking Systems for Police Departments and Crime Laboratories

1901 Wright Blvd. Schaumburg IL 60193

[www.porterlee.com](http://www.porterlee.com)

(847) 985-2060



Internal / External / Report Web Server	
OS	Windows Server R2 - 2012 / 2014 / 2016
CPU	Server Grade Quad Core Processor 2.5 Ghz or Higher (1 multi core processor per 50 concurrent users)
Ram	16 GB or Higher (per 50 concurrent users)
Hard Drive	250 Gig of available hard drive space on OS Drive 250 Gig of available hard drive space on Data Drive (Hard drive space will vary depending on configuration)
Display	1024x768 or higher resolution
Peripherals	Microsoft Windows compatible pointing device
Third Party Applications	<ul style="list-style-type: none"> <li>• IIS 8.5 or higher</li> <li>• ASP.NET framework 4.5 or higher</li> <li>• Windows Identity Foundation 3.5</li> <li>• Adobe Acrobat Reader DC / 2017</li> <li>• 2013 Crystal Report Runtime dll's</li> </ul>

Database Server	
OS	Windows Server R2 - 2012 / 2014 / 2016
CPU	Server Grade Quad Core Processor 2.5 Ghz or Higher
Ram	16 GB or Higher (per 25 concurrent users)
Hard Drive	250 Gig of available hard drive space on OS Drive 1 TB DAS or SAN (Hard drive space will vary depending on configuration)
Display	1024x768 or higher resolution
Peripherals	Microsoft Windows compatible pointing device
Third Party Applications	<ul style="list-style-type: none"> <li>• MS SQL Server 2012 or higher / Oracle 11G or 12C depending on application setup</li> <li>• Database backup managed by local IT (Tape Drive recommended)</li> </ul>

Internal / External Client PC's	
OS	Windows 7 / 10 Professional
CPU	2.0 Ghz dual-core or Higher
Ram	4 Gig or higher
Hard Drive	200 MB of available hard drive space
Display	1024x768 or higher resolution
Peripherals	<ul style="list-style-type: none"> <li>• Microsoft Windows compatible pointing device</li> <li>• Internal PC's Only <ul style="list-style-type: none"> <li>○ (2) USB Ports 2.0 or higher</li> </ul> </li> </ul>
Third Party Applications	<ul style="list-style-type: none"> <li>• Adobe Acrobat Reader DC / 2017</li> <li>• HTML5 compatible browser (IE 11, Chrome)</li> <li>• Internal PC's Only <ul style="list-style-type: none"> <li>○ MS Word 2010 or higher (Full desktop installation required)</li> <li>○ Black Ice Printer Drivers</li> </ul> </li> </ul>



# The Crime Fighter BEAST

Integrated Evidence Tracking Systems for Police Departments and Crime Laboratories



The following are additional recommendations for systems requiring high availability. Please consult with your PLC project manager / Client Account Manager for agency specific requirements.

#### Web High Availability

- Hardware load balancer
- Each web server sized to handle entire load (Best Case)

#### Database High Availability

- In House DBA IT Staff

#### Scalable Configuration

- Multiple Load balanced web servers
- Dedicated web report processing server, shared by the load balanced web servers
- Duplicate Production and Development/Training environments
- DNA and TOX modules require direct database connection from client to database server



## *The Crime Fighter BEAST*

Integrated Evidence Tracking Systems for Police Departments and Crime Laboratories

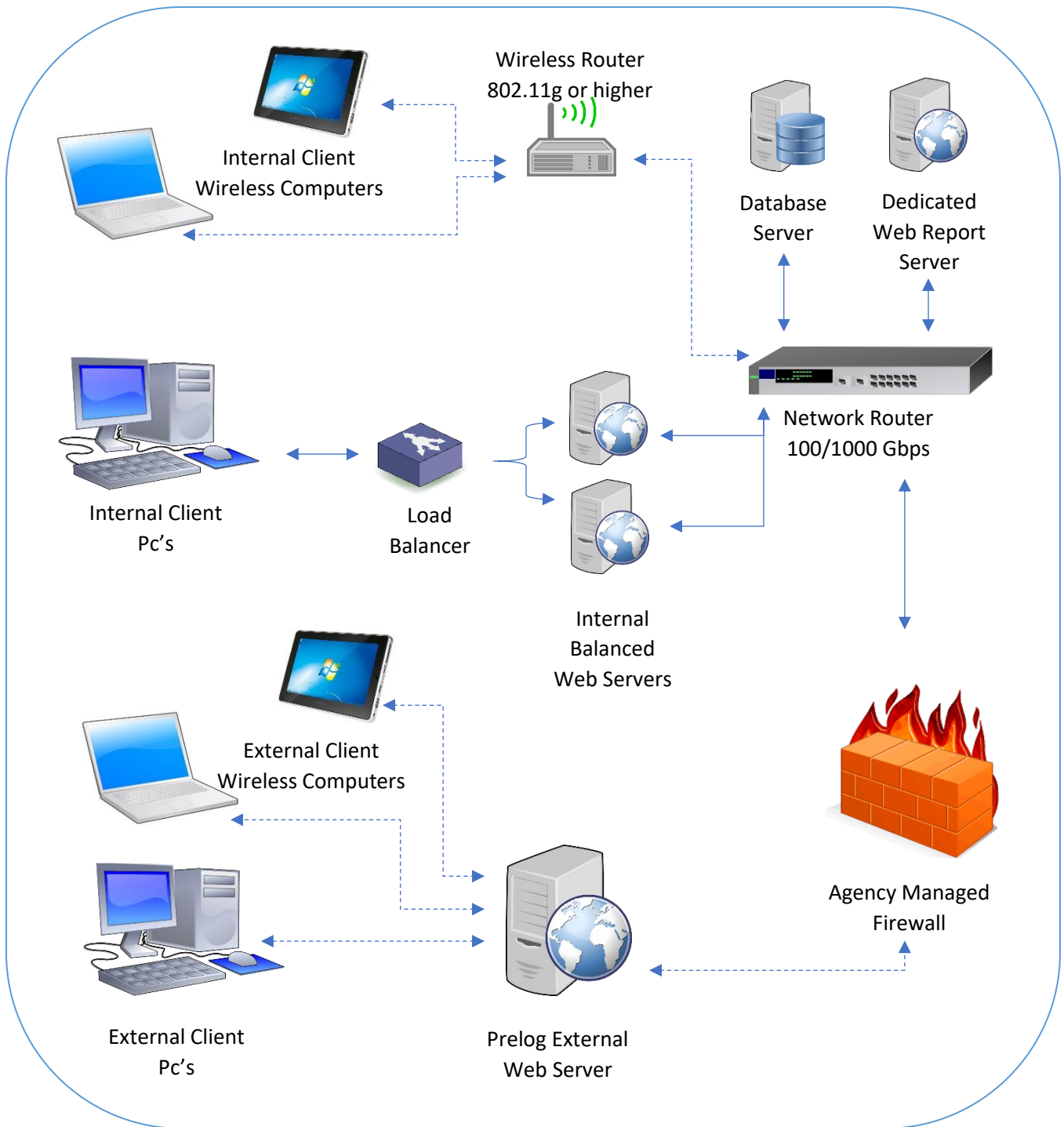
1901 Wright Blvd. Schaumburg IL 60193

[www.porterlee.com](http://www.porterlee.com)

(847) 985-2060



Sample Scaled Configuration



Sample Scaled Schematic Diagram  
(Dotted lines indicate optional features)



# The Crime Fighter BEAST

Integrated Evidence Tracking Systems for Police Departments and Crime Laboratories

1901 Wright Blvd. Schaumburg IL 60193

www.porterlee.com

(847) 985-2060

